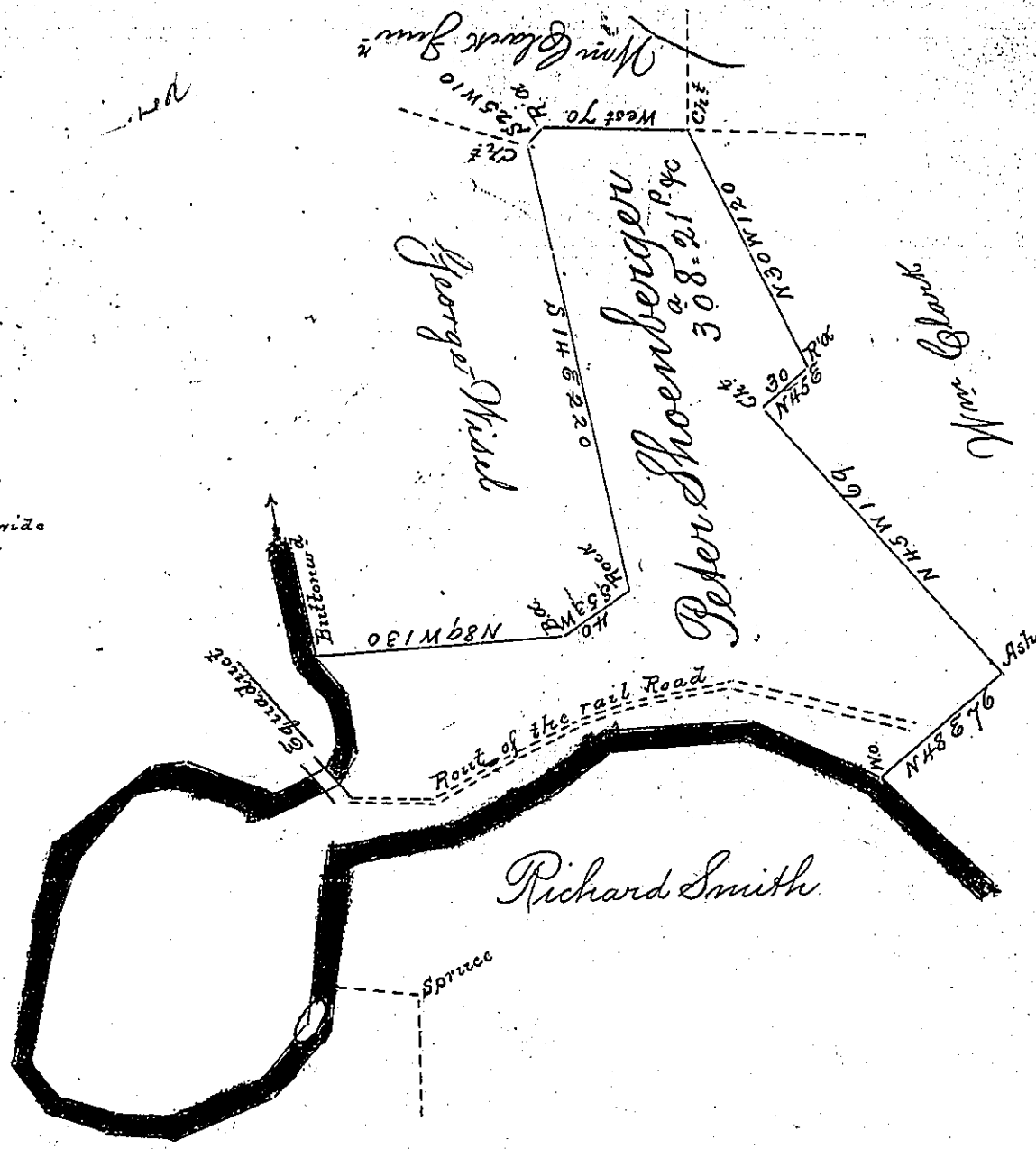


Courses & distance up Conemaugh
from Buttonwood to W. of Wm
Clark

- S 43 E 22 Ash
- S 9 E 32 Elm
- S 32 W 18 Birch at Equeduct
- S 65 W 40 Ash
- N 71 W 46 P
- S 75 W 22 rock at narrows
- S 40 W 34
- S 22 W 30
- S 11 W 74 point of Big Bend 2 p'ns. obliterated
- S 72 E 26
- East 50.50
- N 67 E 48
- N 35 E 32
- N 5 E 86 p' and end of B. Bend
- N 78 E 54
- N 63 E 50
- N 52 E 40
- N 85 E 70
- N 69 E 70 W. of Wm. C.

864.5



Situate on the North side of Conemaugh River
Summerhill Township Cambria County Surveyed
on the 13th day of Dec^r 1830 in pursuance of a Warrant
dated on the 30th day of Nov^r 1830 Containing three Hun-
dred Eight acres & twenty one p^t with the usual
allowance &c by

Wm O'Keefe
D.J.

To Jacob Spangler Esq.
Surveyor General

IN TESTIMONY that the above is a copy of the original remaining on file in
the Department of Internal Affairs of Pennsylvania, made
conformably to an Act of Assembly approved the 16th day of
February, 1833, I have hereunto set my Hand and caused
the Seal of said Department to be affixed at Harrisburg,
this sixth day of May 1902

James W. Latta
Secretary of Internal Affairs.